

Historic, Archive Document

Do not assume content reflects current scientific knowledge, policies, or practices.

SEVENTEENTH ANNUAL CATALOGUE AND PRICE LIST



OF THE

HOME NURSERY

LOCATED AT LA FAYETTE, STARK COUNTY, ILLINOIS

Grounds adjoining and residence one-fourth mile north of City. Office and grounds only five minutes walk from railroad depot, connected by sidewalk.
Local and Long Distance Phones.

IRVIN INGELS, Proprietor



NO AGENTS EMPLOYED. When you buy trees of me you have no irresponsible tree peddlers to deal with, or *tree agent commissions* to pay, you deal direct with the nursery and get your trees from first-hands. If our stock is not as represented you know where to find us. I am after your trade and bound to please. Nothing but first-class stock will be sent out. We believe the only way to build up any business is to deal honestly. :: :: :: :: :: ::



PRESENTING this my seventeenth annual catalogue and price list, I wish to call particular attention to the large **increased acreage** of our nursery during the past few years, having now over **ten acres in apple trees** alone, including 1, 2 and 3-year-olds, and can furnish some varieties in ten to fifteen thousand lots. Also growing a very large quantity of peach, plum, pear and cherry in the leading varieties, suitable for planting in this particular region. **Over thirty acres** devoted exclusively to small fruits, and, as will be seen by the list, we grow only the best. Our experience of eighteen years growing small fruits for the market has given us the most profitable kinds to grow here. The list of shade and ornamental deciduous trees include all the desirable native and introduced varieties suitable for streets, parks, cemeteries, avenues, etc. These we have by the car-load. Have made a specialty of evergreens, and have a fine lot of pines, spruce, arbor vitae, cedar, etc., in all sizes. In ornamental shrubs, vines, roses, etc., our list contains only those that are hardy and desirable.

Remember, we employ no agents.



TERMS AND CONDITIONS

TERMS—CASH ON DELIVERY—5 will be furnished at 10, 50 at 100, and 500 at 1,000 rates. Stock that does not grow under proper treatment will be replaced at half price.

NO AGENTS EMPLOYED—We prefer to deal direct with the planter.

ORDERS BY MAIL—Special attention is given to mail orders, and all questions in regard to varieties, planting, cultivating, etc., will be promptly and cheerfully answered.

NO MONEY ASKED IN ADVANCE—When you receive your trees, and find them as ordered, the money for them will be due, and not before. We guarantee satisfaction, or no sale.

IF AFTER reasonable care has been bestowed, losses occur, it is my custom to replace such plants at one-half the regular catalogue price, or give equivalent value in other stock, but I do not insure their lives. Errors or omissions will always be cheerfully corrected, and if any plants prove to be not true to name and as represented, they will be replaced by others of correct kind and grade, without charge, or the price originally paid for them refunded.

CERTIFICATE OF HEALTH—Our grounds are annually inspected by the state entomologist, and we hold a certificate from him that there is no dangerous insect, or contagious disease of fruits on our premises.

AM ANXIOUS that all the stock I sell shall live and flourish and that all my patrons shall be fully satisfied with their purchase. If they are dissatisfied in any way I wish to be informed of the fact and allowed to do justice to them and myself.

All retail orders will be given my personal attention, which enables me to guarantee first class stock, carefully packed and true to label.

DEALERS and those buying in large quantities please write for wholesale prices on any particular class of goods, as we grow many varieties of both fruit and ornamental trees for the wholesale trade.



Our young Apple Orchard of twenty acres. Rows eighty rods long, thirty-two feet a part.
From a photograph.

APPLE TREES

Standard Trees. 5 to 7 feet high, 3 years old, each, 25c; per 10, \$2.00; per 100, \$18.00; per 1,000, \$125.00.

VARIETIES

Note.—Where the selection of varieties is left to me, will give the very best assortment.

SUMMER

- Astrachan Red**—Large, deep crimson, sub-acid.
- Duchess of Oldenberg**—Streaked with red, good sized, juicy, rich, sub-acid, very productive, early bearer.
- Early Harvest**—Straw color, tender, juicy, fine flavor.
- Yellow Transparent**—White, tender, and juicy, tree comes into bearing immediately.

FALL

- Alexander**—Very large, deep red, tree hardy.
- Autumn Strawberry**—Tender, juicy, sub-acid.

Fameuse or Snow—Deep crimson, flesh white.

Gravenstein—Large, striped, and of the very best quality.

Maiden's Blush—Large, beautiful yellow with blush cheek, best quality.

Pound Sweet—Extra large, pale green, coarse grained, sweet, good flavor.

St. Lawrence—Large, round, streaked with red, good bearer, one of the best.

Summer Rambo—Medium, flat, striped, good quality.

Wealthy—Large, red, sub-acid, very juicy, bears young, immensely productive.

Wolf River—Extremely large and handsome, shaded and striped with red, early bearer, very hardy.

WINTER

Arkansas Black—A remarkably large and handsome crimson-black apple, flesh yellow, juicy and delicious, keeping late, February to April.

Ben Davis—Large, striped red, good bearer.

Domonie—Large, light yellow, striped, extra fine quality.



Young Apple Trees in the nursery row stripping leaves preparatory for fall digging. From a photograph.

APPLE TREES—WINTER—Continued

- Gilpin or Little Romanite**—Medium sized, flesh yellow, very long keeper.
- Grimes Golden Pippin**—Good sized, yellow, of very best quality.
- Golden Russet**—Dull russet, crisp, juicy, rich.
- Hubbardston's**—Very large, striped, dull red on yellow, coarse grained, but of fine flavor.
- Jonathan**—Medium sized, dark red, extra fine quality.
- Mann**—Large, green, mild sub-acid.
- Minkler**—Large, greenish yellow, striped red, fine quality, good bearer.
- Missouri Pippin**—Medium sized, bright red, flesh white and firm, aromatic, early bearer.
- Milam**—Medium, dull red, splendid keeper, and of best quality.
- McIntosh Red**—A handsome apple of fine quality.
- McMahon**—Originated in Wisconsin, large white, sometimes striped pale red, flesh white, fine grained and tender. August to September.
- Northern Spy**—Large, striped, mild sub-acid, delicious flavor.
- Northwestern Greening**—Very hardy, yellow, of good size.
- Pewaukee**—Large, dull striped, red and yellow, sub-acid, aromatic flavor, tree very hardy.
- Pennock or Large Romanite**—Red, coarse grained, mild flavor.
- Rome Beauty**—Large, yellow shaded red, good quality.
- Roman Stem**—Medium sized, yellow lightly russeted, extra good quality.
- Salome**—Large, similar in color and flavor to Jeneting, tree hardy.

Seek No Farther—Medium to large, striped, dull red, flesh tender, rich, and of excellent flavor.

Shackelford—Large, high colored, striped, fine flavor, new variety from Missouri of extra value. December and May.

Stark—Large, striped, coarse, mild sub-acid, valuable as a keeper.

Wine Sap—Medium, large, dark red, crisp and juicy.

Willow Twig—A well known variety, large, striped, sub-acid, good keeper.

Yellow Belleflower—Large, yellow, flesh tender and juicy, one of the best.

DWARF APPLE TREES

Astrachan Red, Yellow Transparent—On Paradise stock, 3 years old, 4 to 5 feet.

Each, 40c; per 10, \$3.00.

Apple trees grown as dwarfs come into bearing very much sooner than standards, in fact they begin to bear the second year after planting. The dwarfing makes them bear profusely. They are well adapted for town lots or small garden, where a large tree would not be desirable. The above list embraces the most popular summer varieties.

CRAB APPLE TREES

First class, 5 to 6 feet. Each, 35c; per 10, \$3.00.

Hyslop—Large, dark red, productive, valuable; best for all purposes.

Whitney No. 20—One of the largest, juicy and pleasant.

Transcendent—This is one of the best and largest of the Siberian Crab. The fruits are 1½ to 2 inches in diameter; bright yellow, striped red; excellent for culinary; immensely productive.



Looking down nursery row of three-year Apple Trees. From a photograph.

CHERRY TREES

Two years old, first class, 5 to 6 feet. Each, 50c; per 10, \$4.00.

Two years old, first class, 3 to 4 feet. Each, 35c; per 10, \$3.00.

Early Richmond—Large, bright red, most popular kind, very productive, bears soon after planting.

English Morello—Blackish red, juicy, acid, good, very late.

Late Duke—Very large, light red, tree up-right grower.

Montmorency—Large, red, very productive, ten days later than Early Richmond.



An eighty rod row of Kieffer Pear Trees on Home Nursery grounds. Taken from a photograph.

PEAR TREES

STANDARD PEARS

Kieffer—Very large, handsome pear, keeps well into winter, early and abundant bearer. Each, 50c; per 10, \$4.00.

Goodale—Medium large, excellent flavor, ripens early in July. Each, 40c; per 10, \$3.50.

Seckel—Small, skin rich yellowish brown, the richest and highest flavored pear known. Each, 40c; per 10, \$3.50.

Koonce—Medium to large, spicy, juicy, sweet, and good, season very early. Each, 50c; per 10, \$4.00.

DWARF PEARS

Duchess de Angouleme—Large size, late fall. Each, 40c; per 10, \$3.50.

Seckel—For description see under Standard. Each, 40c; per 10, \$3.50.

GRAPE VINES

2 years old.

Concord—Well known standard variety, succeeds wherever grapes will grow, very prolific. Each, 15c; per 10, \$1.00; per 100, \$6.00.

Moore's Early—Very large, purple, exceedingly hardy, two weeks earlier than Concord. Each, 25c; per 10, \$2.00.

Moore's Diamond—The leading early white grape, vine like the Concord in growth, hardiness, and foliage. Each, 30c; per 10, \$2.50.

Niagara—Large, greenish white, excellent quality. Each, 25c; per 10, \$2.00.

Pocklington—Golden yellow, very aromatic and sweet. Each, 25c; per 10, \$2.00.

Woodruff Red—Of iron clad hardiness, large, amber color, ripens soon after Concord. Each, 35c; per 10, \$3.00.

GOOSEBERRIES

2 years old.

Houghton—(American variety), clear red when fully ripe, very prolific and profitable. Each, 15c; per 10, 75c.

Downing—(American variety), large, white, valuable. Each, 15c; per 10, \$1.00.

Industry—(English variety), inch to inch and one-fourth in diameter; free from mildew; the best English variety. Each, 25c.

CURRANTS

2 years old.

Victoria—Old and reliable sort. Each, 10c; per 10, 75c.

White Grape—Very prolific, mild flavor, large. Each, 10c; per 10, 75c.

Fay's Prolific—Heavy bearer, bright red, large size. Each, 15c; per 10, \$1.00.

Cherry—Very large, mild sub-acid. Each, 10c; per 10, 75c.

BLACKBERRIES

Snyder—Well known, valuable, early variety. Per 10, 25c; per 100, \$2.00.

Erie—Vigorous grower, large berry. Per 10, 50c; per 100, \$3.00.

Ancient Briton—Very hardy, large size, late. Per 10, 50c; per 100, \$3.00.

Note.—Blackberries, as well as Currants and Gooseberries, like rich soil and should be heavily manured and well cultivated to get good results.



Photograph of Peach Orchard on Home Nursery grounds, the largest in this part of the State. Trees three years planted.

PEACH TREES

First class, 5 to 7 feet. Each, 25c; per 10, \$2.00; per 100, \$18.00; per 1,000, \$100.00.

Following varieties are arranged in their order of ripening, which extends from June into October. Except as noted, all free stones.

Alexander—Medium to large, skin greenish white, shaded to rich red, flesh very juicy, cling stone, July 1.

Champion—Large, handsome, early variety, creamy white with red cheek.

Hale's Early—Medium sized, flesh greenish white, half cling, excellent quality, tree very productive.

Bokara—Claimed to be the hardiest peach known, large, yellow, good quality.

Hill's Chili—Dull yellow, very hardy, large and fine.

Early Crawford—Large, yellow, and excellent quality.

Late Crawford—Same as Early, about three weeks later.

Kalamazoo—Large, yellow, very productive.

ELBERTA—Large, yellow, with red cheek, hardy, prolific, one of the leading market sorts.

CROSBY—One of the hardiest, abundant bearer, yellow, fine quality.

Stump—Very large, white with red cheek.

Wonderful—Large, yellow and red, yellow flesh, valuable.

RASPBERRIES

Gregg (Black Cap)—Well known, large, late variety. Per 10, 30c; per 100, \$2.50.

Palmer (Black Cap)—Very early, extra hardy, heavy bearer. Per 10, 30c; per 100, \$2.50; per 1,000, \$12.00.

Cumberland—A mammoth Black Cap with stout, heavy canes; in hardiness and productiveness among the best; season medium late. Per 10, 75c; per 100, \$5.00.

Kansas (Black Cap)—Vigorous grower, berries very large and fine, ripens soon after Palmer. Per 10, 40c; per 100, \$3.50.



Photograph of Palmer Raspberry, showing growth of vines, extremely hardy, exceptionally free from disease.



General view of Home Grounds, showing residence at right. Tenant houses in foreground. From a photograph.

RASPBERRIES—Continued

- Eureka** (Black Cap)—Very large, early, fine flavored, prolific. Per 10, 50c; per 100, \$3.50.
- Munger** (Black Cap)—New, extra large, very late, valuable. Per 10, 50c; per 100, \$4.00.
- Cuthbert** (Red)—Best of the reds, long season. Per 10, 30c; per 100, \$2.00.
- Turner** (Red)—Canes thornless, bright red berries. Per 10, 30c; per 100, \$2.00.

For large quantities of any of the above varieties write for special low prices.

STRAWBERRIES

First class plants. Per 10, 25c; per 100, \$1.00; per 1,000, \$8.00.

The following varieties will be found to be the best. Have made a specialty of strawberry culture for a number of years, and grow only the kinds we know to be good. When the selection of varieties is left to me, will give good assortment.

Male Varieties.

Dunlap.
Wm. Belt.
Brandywine.
Gandy.
Rough Rider.
Bederwood.

Female Varieties.

Bubach.
Sample.
Haverland.
Lady Thompson.
Enormous.
Parker Earle.

By planting both early and late varieties you can have fresh strawberries from four to five weeks in succession. They produce the most per acre and do it in less time after planting than any other fruit.

Note.—Have given no description of Strawberries as they are **all good**. While one variety may produce better than another one year, it may not the next. Hence there is no one variety that is the best every year.

STRAWBERRIES—Continued

Owing to the variability of the pollen, it is a good rule to plant a number of kinds in one plantation. Also set early and late varieties to give a succession of fruit. In growing the plants we keep each variety properly labeled, so that our plants are true to name. They are grown on very strong land; are not to be compared with the small, sickly plants grown on sand and offered at a low price.

MISCELLANEOUS

- Rhubarb Linneas** (Pie Plant)—Fine and tart. Each, 15c; per 10, \$1.00.
- Asparagus, Conover's Colossal**—very large, tender. Per 10, 25c; per 100, \$1.50.
- Osage Hedge**—Plants one year old, first class. Per 100, 50c; per 1,000, \$3.00.
- Berry Box Lumber** at wholesale prices.
- Vegetable Plants** in season; Cabbage, Tomato, Celery, etc.

PLUM TREES

EUROPEAN VARIETIES

Each, 40c; per 10, \$3.50.

- German Prune**—Large, dark purple, green flesh.
- Green Gage**—Very large, greenish, fine flavor.
- Bristol**—Large, dull reddish purple, very hardy and a good bearer, originated in Henry County, Illinois. Price, each, 75c.

JAPAN VARIETIES

Each, 40c; per 10, \$3.50.

- Abundance**—Large, lemon yellow, oldest and best known sort.

PLUM TREES—JAPAN VARIETIES—Continued

Burbank—Very large, excellent quality, hardy tree, extremely productive.

Red June—Early ripening, medium large, red with yellow flesh, fine flavor.

Ogon—Bright golden yellow, one of the largest of the Japs.

Satsuma—Large, purplish crimson with blood red flesh, delicious flavor.

NATIVE VARIETIES

Each, 35c; per 10, \$3.00.

Wolf—Free stone, large size, red, productive.

Wisconsin Red—Called Miner by some, very large, red, flesh solid, sweet, tree an annual bearer.

Wild Goose—Old and widely planted, variety large, light red, very early, season July 15.

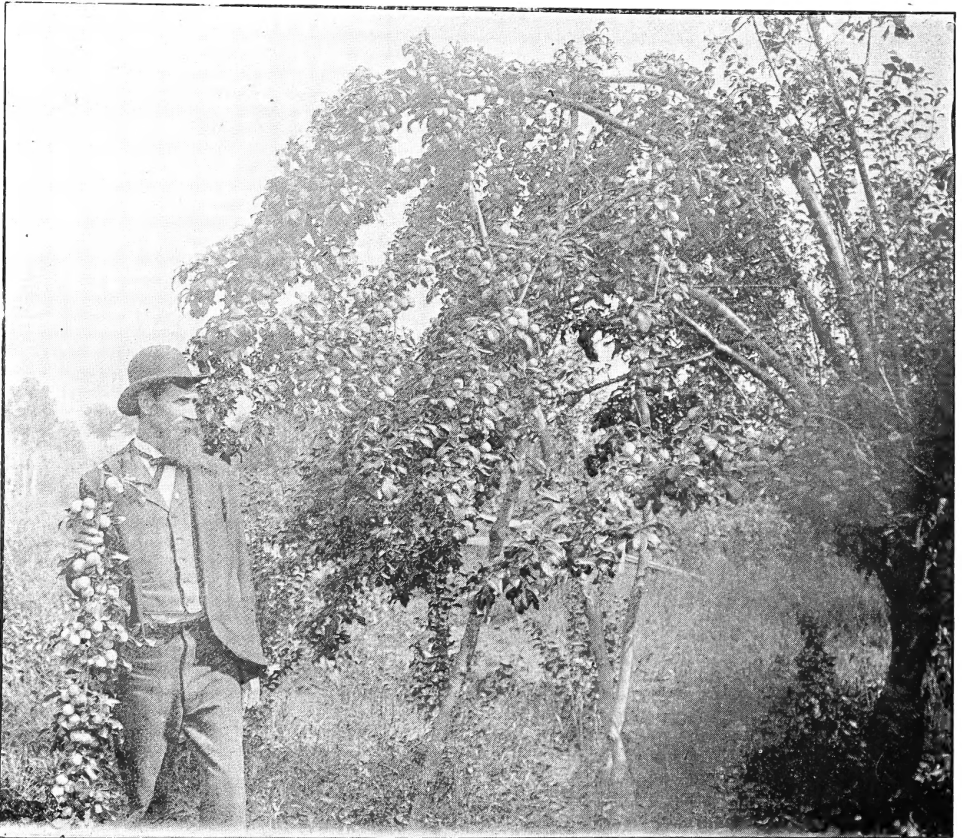
ORNAMENTAL TREES

Birch (European White)—Rapid grower, white bark, beautiful for streets, avenues, parks and cemeteries.

Height, 12 to 14 ft.; each \$1 00

Box Elder—Fast growing, makes dense shade.

Height, 5 to 6 ft.; each, 25c.; per 10, \$2.00.



The above is from a photograph of the BRISTOL PLUM, showing part of tree and detached limb. It is a chanced seeding of European sort planted about forty years ago by Mr. Morris of Henry County. Owing to its great merit there have been a good many sprouts taken from the original tree of which the photograph is one. Mr. Bristol called my attention to this valuable plum several years ago and I named it after him. It is large size, dull greenish purple, flesh greenish. Fine flavor. Tree very hardy and productive, fruit hangs on until ripe. The trees we have to offer are budded on native plum seedlings which insures early bearing. Price each 75 cents.

ORNAMENTAL TREES—Continued

Ash (White)—A rapid growing native tree of fine outline, excellent for avenues and parks.

Height, 5 to 7 ft.; each, 20c.; per 10, \$1.50.

Catalpa—Large heart shaped leaves, blossom profusely in July, fine for lawns or park.

Height, 7 to 10 ft.; each, 30c.; per 10, \$2.50.

Catalpa, Bungii—Called Umbrella Catalpa, fine for lawn, 2 year grafted. Each, 50c.

Coffee Nut—Corrugated bark, very ornamental. Height, 4 to 6 feet; each, 35c.

Elm (American White)—Makes a rapid growth, attains a large size, with spreading top.

Height, 6 to 7 ft.; each, 25c.; per 10, \$2.00.

Height, 8 to 10 ft.; each, 40c.; per 10, 3.50.

Height, 9 to 12 ft.; each, 50c.; per 10, 4.00.

Hard Maple—Medium, slow growth, dense shade, round, spreading top, beautiful tree.

Height, 6 to 8 ft.; each, 40c.; per 10, \$3.50.

Height, 8 to 10 ft.; each, 50c.; per 10, 4.50.

Height, 10 to 12 ft.; each, 75c.; per 10 5.00.

Soft Maple—Very rapid grower, makes a beautiful tree; while young should have the leading shoots cut back each year to prevent tree from becoming too large.

Height, 6 to 8 ft.; each, 25c.; per 10, \$2.00.

Height, 9 to 12 ft.; each, 25c.; per 10, 2.50.

Height, 12 to 14 ft.; each, 40c.; per 10, 3.00.

Height, 14 to 16 ft.; each, 50c.; per 10, 4.00.

Poplar Carolina—A hardy native tree of exceedingly rapid growth, pyramidal in form, with large, glossy leaves, grows anywhere.

Height, 6 to 8 ft.; each, 30c.; per 10, \$2.50.

Height, 8 to 10 ft.; each, 40c.; per 10, 3.00.

Poplar, Lombardy—Remarkable for its erect growth and spire-like form. Height, 8 to 10 feet; each, 25c; per 10, \$2.00.

American Sycamore—Rapid growing tree, with large leaves and white bark, fine for avenues. Height, 6 to 7 feet; each, 25c; per 10, \$2.00. 8 to 10 feet, each, 40c; per 10, \$3.50.

ORNAMENTAL WEeping TREES

Cut-leaved Birch—The most popular tree of its class, makes a tall, slender yet vigorous growth, graceful drooping habit, silvery white bark and beautiful cut foliage. Height, 6 to 7 feet; each, \$1.00.

Camperdown Elm—Weeping variety of Scotch Elm. The branches grow horizontally and downward in strangely crooked lines, never getting much higher than where grafted, usually about 6 feet high. Price, 2-year-old head, \$1.00.

Kilmarnock Willow—Makes a fine umbrella-like head, with branches drooping gracefully. Each, 40c.

Mt. Ash—A fast growing, weeping tree, with tortuous spreading branches. Each, \$1.00.

Tea's Mulberry—The most perfect weeping tree grown, does well in any situation, absolutely hardy and easily transplanted. Each, \$1.00.

HARDY ORNAMENTAL SHRUBS

Berberry—Purple-leaved, fine for ornamental hedging. Height, 2 feet; each, 25c.

Cornus Sanguinea (Dogwood)—Branches are bright red in winter. Each, 30c.

Calycanthus (Spicewood)—Flowers chocolate color, sweet scented. Each, 40c.

Hardy Hydrangia—Blooms from July until frost. The finest shrub for lawn or border yet introduced. Perfectly hardy and of easy culture. Price of blooming size plants, 18-inch, 40c each; 24-inch, 50c each.

Lilac—Blooms profusely in early spring, very fragrant. Each, 25c; Dwarf, 40c.

Pyrus Japonica (Burning Bush)—Flower red, very early. Each, 25c.

Spiraea Van Houte—Best of the Spiraea, bloom white. Each, 25c.

Syringa Grandiflora—Flowers white, very fragrant. Each, 25c.

Snow Ball—Well known favorite shrub, great bloomer. Each, 25c.

Weigelia Hendersoni—Pink, bloom in June and July so full as to nearly hide the foliage, very desirable shrub. Each, 25c.

Yucca Filamentosa—Green during winter, blossom white. Each, 25c.



Hardy Hydrangia. From a photograph taken last summer on our grounds.

HARDY CLIMBING PLANTS

- American Ivy**—Excellent climber, beautiful autumn foliage. Each, 25c.
- Trumpet Vine**—Large trumpet-shaped flowers, vigorous grower. Each, 25c.
- Clematis Jackmani**—Large purple, blooms from July until frost. 3 years, each, 75c.
- Clematis Henryi**—White, an excellent bloomer. 3 years, each, \$1.00.
- Clematis Paniculata**—Very rapid growth, small white flower. Each, 50c.
- Honeysuckle Halliana**—Blooms all summer, very fragrant. Each, 35c.
- Honeysuckle Chinese Evergreen**—Good bloomer, holds foliage into winter. 3 years, each, 35c.
- Purple Wisteria**—Splendid hardy climber, flowers in large clusters, pale blue. Each, 35c.

HARDY ROSES

All strong plants, 1/2 to 3 feet high.

- Persian Yellow**—June rose, fine bloomer. Each, 25c.
- Mad. Plantier**—June rose, white, fine. Each, 25c.
- Crimson Rambler**—Of recent introduction, proves to be extra hardy, free bloomer and strong grower, flowers are produced in clusters of 35 to 40 each; color, dark crimson. 2 to 3-foot plants, blooming size, each, 50c.
- Cumberland Belle**—Climbing moss, bright, silvery rose color, very fragrant, buds nicely mossed. Each, 50c.
- Seven Sisters**—Flowers in clusters, opening a light rose color, changing to white, beautiful climber. Each, 25c.
- Prairie Queen**—Well known climber, bright, rosy red, foliage large. Each, 30c.
- Gen. Jacqueminot**—Ever-flowering, brilliant, crimson, large, and of hardy habit. Each, 35c.
- Paul Neyron**—Largest ever-blooming rose known, free bloomer, deep rose color. Each, 35c.

EVER GREENS

American Arbor Vitae—

Height	Each	Per 10	Per 100
18 to 24-inch.....	20c	\$1.50	\$10.00
2 to 3 feet.....	25c	2.00	15.00
3 to 4 feet.....	35c	2.50	20.00



American Arbor Vitae, Pyramadalis—

Height	Each
3 to 4 feet.....	50c

The Arbor Vitae is well adapted for either ornamental hedging or windbreaks. Rapid grower, perfectly hardy, native. Easily transplanted. For hedging, set 12 to 16 inches apart; windbreaks, 3 to 4 feet, in rows.

Spruce, Colorado Blue—

Height	Each	Per 10
18 to 24-inch.....	25c	\$2.00
2 to 3 feet.....	35c	2.50

Variety of American Spruce from Colorado, a rapid grower, foliage a beautiful bluish green, sturdy, compact, dense growth. A very handsome tree for lawn or park. Will be the coming tree for shelter belts.

Spruce, Norway—

Height	Each	Per 10	Per 100
18 to 24-inch.....	20c	\$1.50	\$10.00

This is the big tree of Norway and more widely planted than any other for windbreaks and shelter belts. Of very rapid growth, easily transplanted.

EVERGREENS—Continued

Red Cedar—

Height	Each	Per 10	Per 100
2 to 3 feet.....	20c	\$1.50	\$10.00

A native tree. While it never makes a very large tree, it grows very rapidly while young. On account of its quick growth and dense foliage, it is very valuable for windbreaks and screens, also fine for ornamental hedging.

Pine, White—

Height	Each	Per 10	Per 100
12 to 15-inch.....	20c	\$1.75	\$12.00
2 feet	35c	2.50	

Pine, Scotch—

Height	Each	Per 100	Per 100
18 to 24-inch.....	20c	\$1.50	\$10.00

The pines are of very rapid growth, and are well suited for shade or shelter belts, especially where large trees are desired.



WHERE WE'RE AT

La Fayette is located 150 miles south-west of Chicago, on the Rock Island & Peoria Ry., midway between the two cities; 45 miles from Peoria, 30 miles from Galesburg, 10 miles from Kewanee and 5 miles from Galva, on the main line of the Q. R. R. In the midst of one of the richest farming communities in the state. Boasts of a population of 300 peace-loving people, electric lights and an ideal Mutual Telephone Co., with trunk lines to all the adjoining towns, also connects with the Central Union.

The Home Nursery during the season furnishes employment to a large number of the wage-earning people of the village.



Partial view of Residence in winter. From a photograph.



Photo of proprietor's front lawn as seen from the rear.
Partial view of residence on the left. Tenant houses on the right.